



GMT MONTHLY MEMBERSHIP PROGRESS REPORT

Results as of: 1/31/2020

GMT Constitutional Area 5 - J, Group J

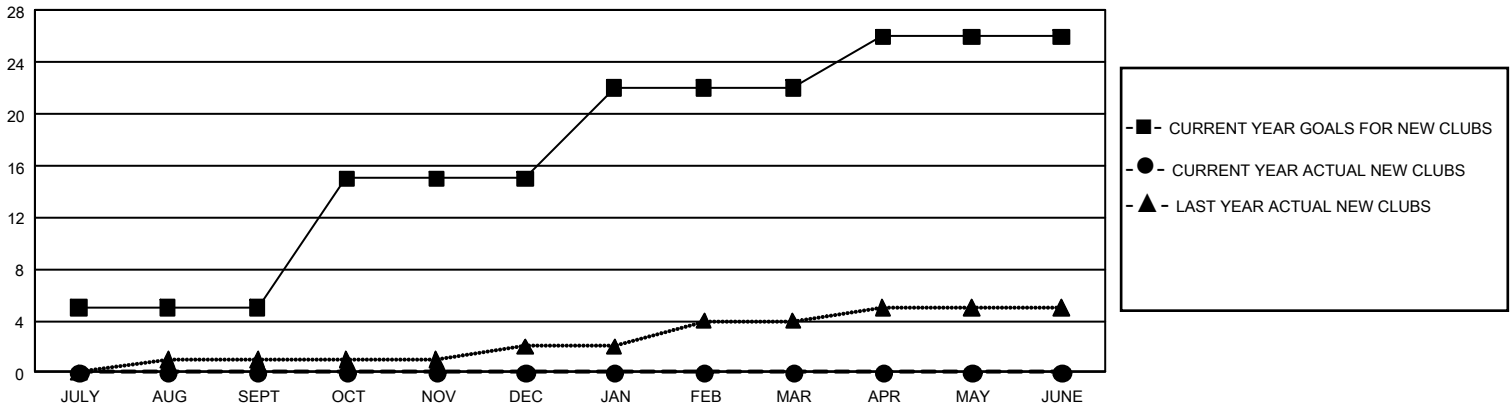
GMT: OPEN

REPORT DOES NOT INCLUDE CLUBS IN UNDISTRICTED AREAS.

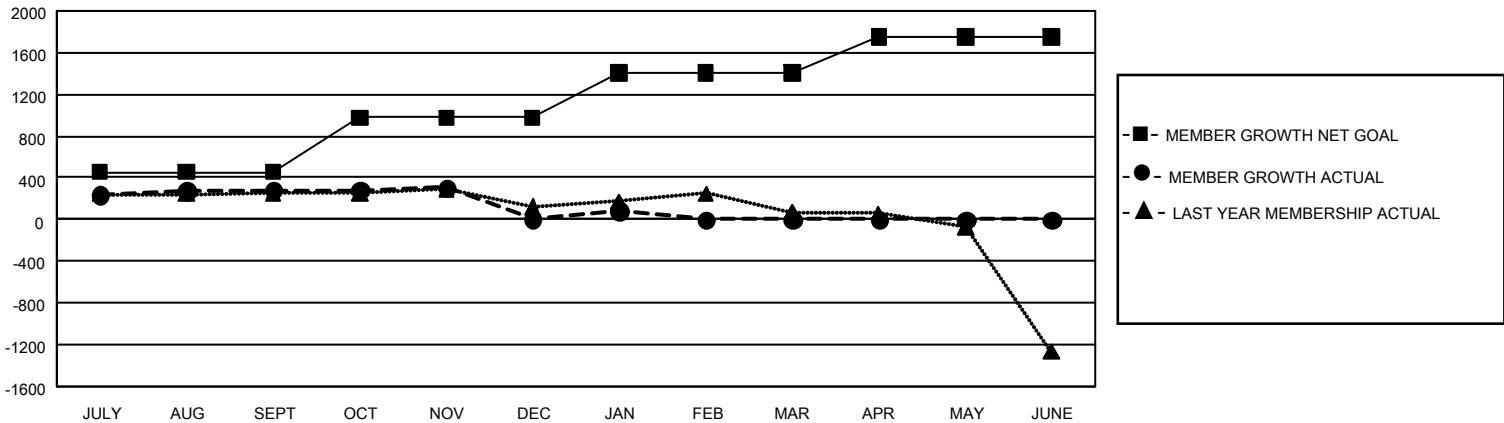
Clubs			
RESULTS FOR 2019-2020			
QUARTER	NEW CLUB GOAL	NEW CLUBS	DROPPED CLUBS
JULY/AUG/SEPT	15	0	1
OCT/NOV/DEC	30	0	1
JAN/FEB/MAR	21	0	0
APR/MAY/JUNE	12	0	0

Members			
RESULTS FOR 2019-2020			
QUARTER	MEMBER GROWTH NET GOAL	MEMBER GROWTH ACTUAL	DROPPED MEMBERS ACTUAL (including transfers)
JULY/AUG/SEPT	1,356	864	532
OCT/NOV/DEC	1,572	397	654
JAN/FEB/MAR	1,284	229	138
APR/MAY/JUNE	1,038	0	0

GOALS AND ACTUAL NEW CLUBS CUMULATIVE



GOALS AND ACTUAL MEMBERS CUMULATIVE



DROPPED CLUBS: 2	524 CLUBS OF 795 ADDED 1 OR MORE NEW MEMBERS	GENDER DISTRIBUTION
		MALE 23,637 (78.36%)
		FEMALE 6,529 (21.64%)
DROPPED MEMBERS	CLICK HERE FOR CUMULATIVE MEMBERSHIP DATA	TOTAL FAMILY UNIT MEMBERS 8,730
DECEASED 135		FAMILY MEMBERS PAYING HALF DUES 4,734
CLUB CANCELLED 8		
OTHER 1,180		
TOTAL 1,323		